



GMT MONTHLY MEMBERSHIP PROGRESS REPORT

Results as of: 6/30/2017

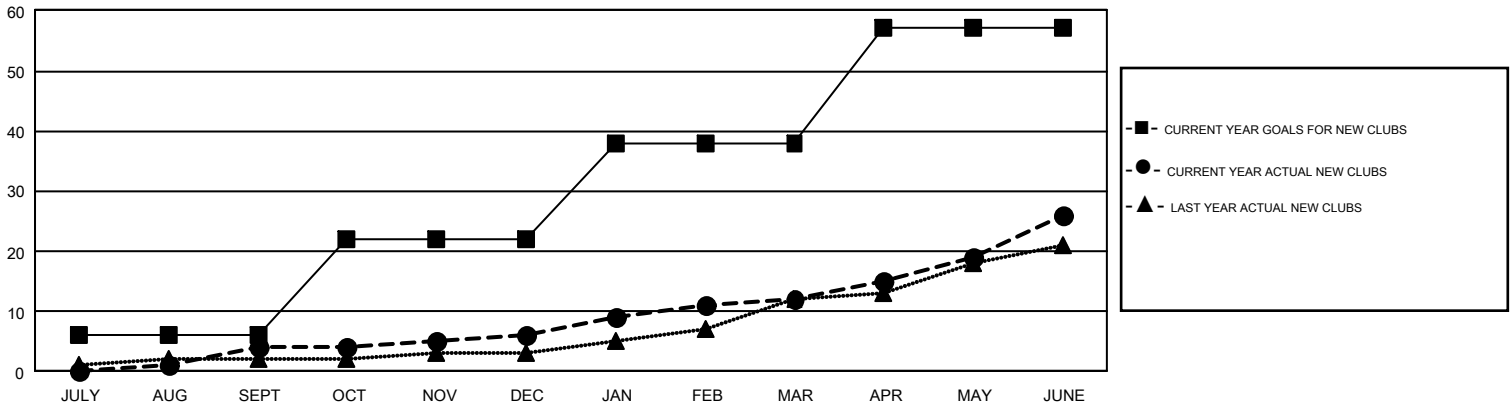
GMT Constitutional Area 1, Group A

GMT: OPEN

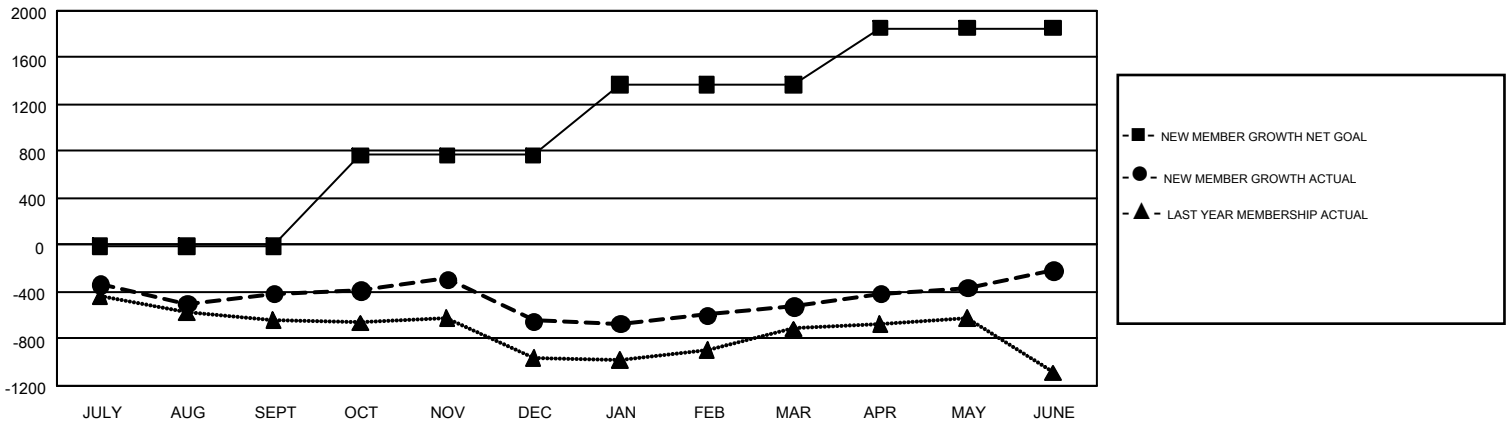
REPORT DOES NOT INCLUDE CLUBS IN UNDISTRICTED AREAS.

Clubs				Members			
RESULTS FOR 2016-2017				RESULTS FOR 2016-2017			
QUARTER	NEW CLUB GOAL	NEW CLUBS	DROPPED CLUBS	QUARTER	NEW MEMBER GROWTH NET GOAL (not reinstated or transfers)	NEW MEMBER GROWTH ACTUAL (not reinstated or transfers)	DROPPED MEMBERS ACTUAL (including transfers)
JULY/AUG/SEPT	6	4	8	JULY/AUG/SEPT	-14	968	1,382
OCT/NOV/DEC	16	2	5	OCT/NOV/DEC	781	1,116	1,348
JAN/FEB/MAR	16	6	4	JAN/FEB/MAR	604	1,091	965
APR/MAY/JUNE	19	14	5	APR/MAY/JUNE	482	1,799	1,493

GOALS AND ACTUAL NEW CLUBS CUMULATIVE



GOALS AND ACTUAL MEMBERS CUMULATIVE



DROPPED CLUBS: 22	1,061 CLUBS OF 1,556 ADDED 1 OR MORE NEW MEMBERS	GENDER DISTRIBUTION
DROPPED MEMBERS	CLICK HERE FOR CUMULATIVE MEMBERSHIP DATA	MALE 30,013 (65.89%)
DECEASED 694		FEMALE 15,536 (34.11%)
CLUB CANCELLED 180		TOTAL FAMILY UNIT MEMBERS 7,898
OTHER 4,314		FAMILY MEMBERS PAYING HALF DUES 4,091
TOTAL 5,188		